

COMMUNITY CONNECTION

WHERE SAFETY, ACCESS, OPEN SPACE, AND HISTORY
COME TOGETHER

City of Manitou Springs
2024



PROJECT OVERVIEW

PROJECT PROPOSAL & PURPOSE

Project Proposal

- Construct a public road on the Old Midland Rail corridor
- Create a connection between Manitou Avenue (West) and Ruxton Avenue
- Donation of land for public open space

Project Purpose

- Provide an alternate route to Barr Trail, Manitou Incline, and the Cog Railway
- Provide Emergency Evacuation and Emergency Access Route
- Provide additional public open space, trailhead, and protect mountain backdrop
- Relieve congestion on Ruxton Avenue
- Provide opportunity for additional parking for Barr Trail, Manitou Incline, the Cog Railway, other businesses in the area



OPPORTUNITIES

- **Improved Traffic Conditions**
 - Relieves traffic congestion at roundabout
 - Relieves traffic issues on Ruxton
 - Relieves auto/pedestrian conflicts on Ruxton Ave
- **Public Safety and Community Protection**
 - Provides critical emergency evacuation route
 - Improves emergency response times
 - Improves emergency access to adjacent neighborhoods
 - Provides strategic location for emergency heli-pad
- **Puts the right of way under public control**
- **Provides trail corridor**
- **Provides additional access to open space areas**
- **Improves living environment for residents on Ruxton Ave**
- **Improves access to Bar Trail, Cog, Incline, other businesses, residences**
 - More opportunity to explore alternate transportation options in the Ruxton Corridor
 - More opportunity to explore pedestrian improvements

POTENTIAL PARTNERS

- **City of Manitou Springs**
- **Manitou Springs OSAC-Open Space Advisory Committee**
- **Manitou Springs Urban Renewal Authority**
- **City of Colorado Springs**
- **Colorado Springs Utilities**
- **El Paso County**
- **U.S. Forest Service**
- **The Cog**
- **Friends of Pikes Peak**
- **Walton et al**
- **Adventures Out West (UU Cam LLC)**
- **Mansfield Development Co**
- **Centennial Enterprises**
- **Great Outdoors Colorado**
- **Colorado Water Conservation Board – Fire Resiliency Grant**
- **The Trust for Public Land**
- **Palmer Land Conservancy**
- **Trails Open Space and Parks Program**
- **El Paso County**
- **Friends of Pikes Peak**
- **Rocky Mountain Field Institute**
- **State of Colorado**
- **Federal Grants/Funding**
- **Private Philanthropists**

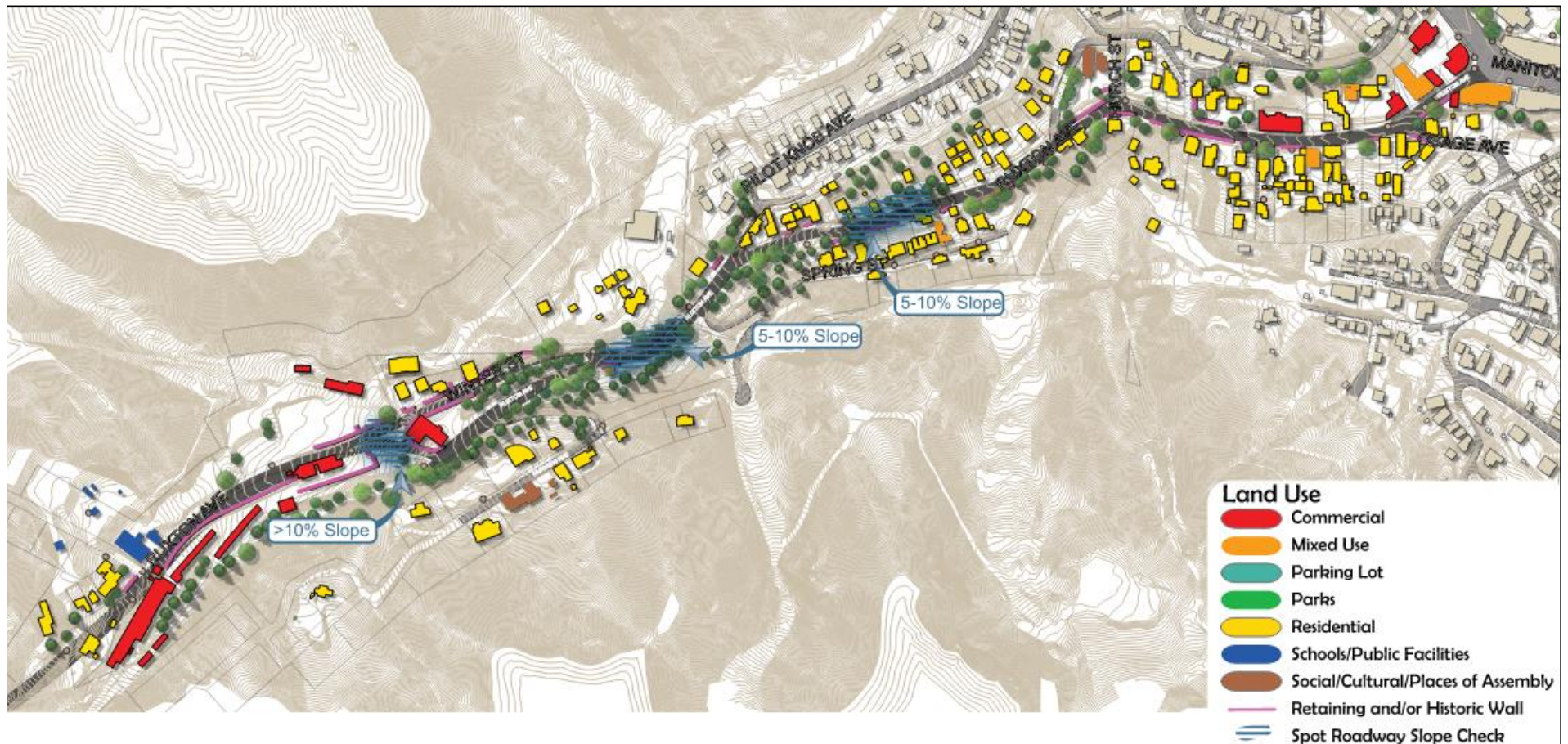
CONSISTENCY WITH COMMUNITY PLANS

- **Ruxton Avenue Functionality Study (Manitou Springs)**
- **Ruxton Avenue Use & Impact Study**
- **Ring the Peak**
- **Master Plan-Ute Pass Regional Trail**
- **Manitou Springs Park Open Space & Trail (P.O.S.T.) Master Plan**
- **Manitou Avenue Master Plan**
- **City of Manitou Springs Parking Management Study/Strategic Plan**
- **Transportation and Mobility Master Plan (Manitou Springs)**
- **Manitou Incline Site Development and Management Plan**
- **Your El Paso County Master Plan**
- **El Paso County Parks Master Plan**
- **Colorado Springs & The Pikes Peak Region Destination Master Plan**
- **Plan Manitou**

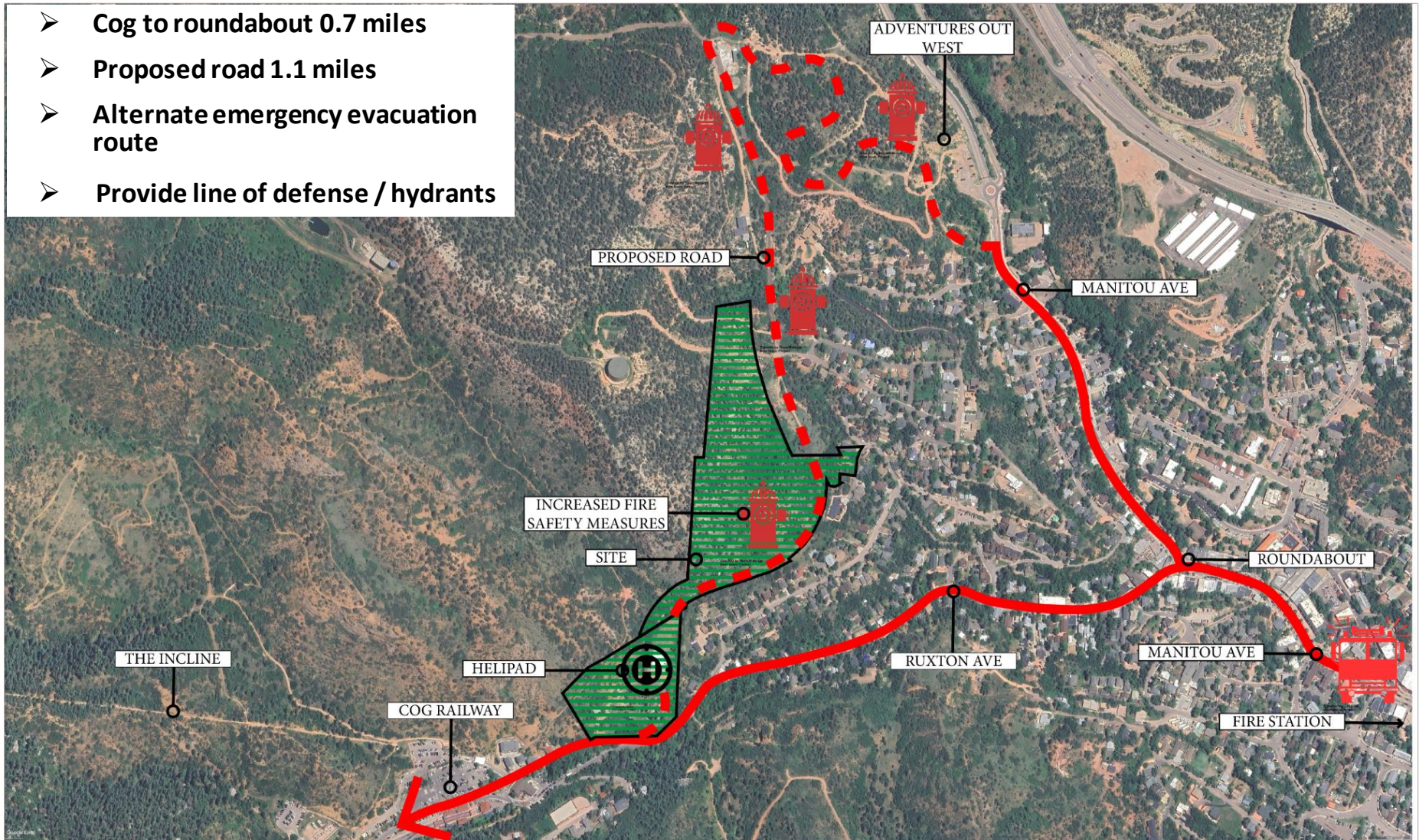
RUXTON AVENUE FUNCTIONALITY STUDY

Ruxton Avenue Context

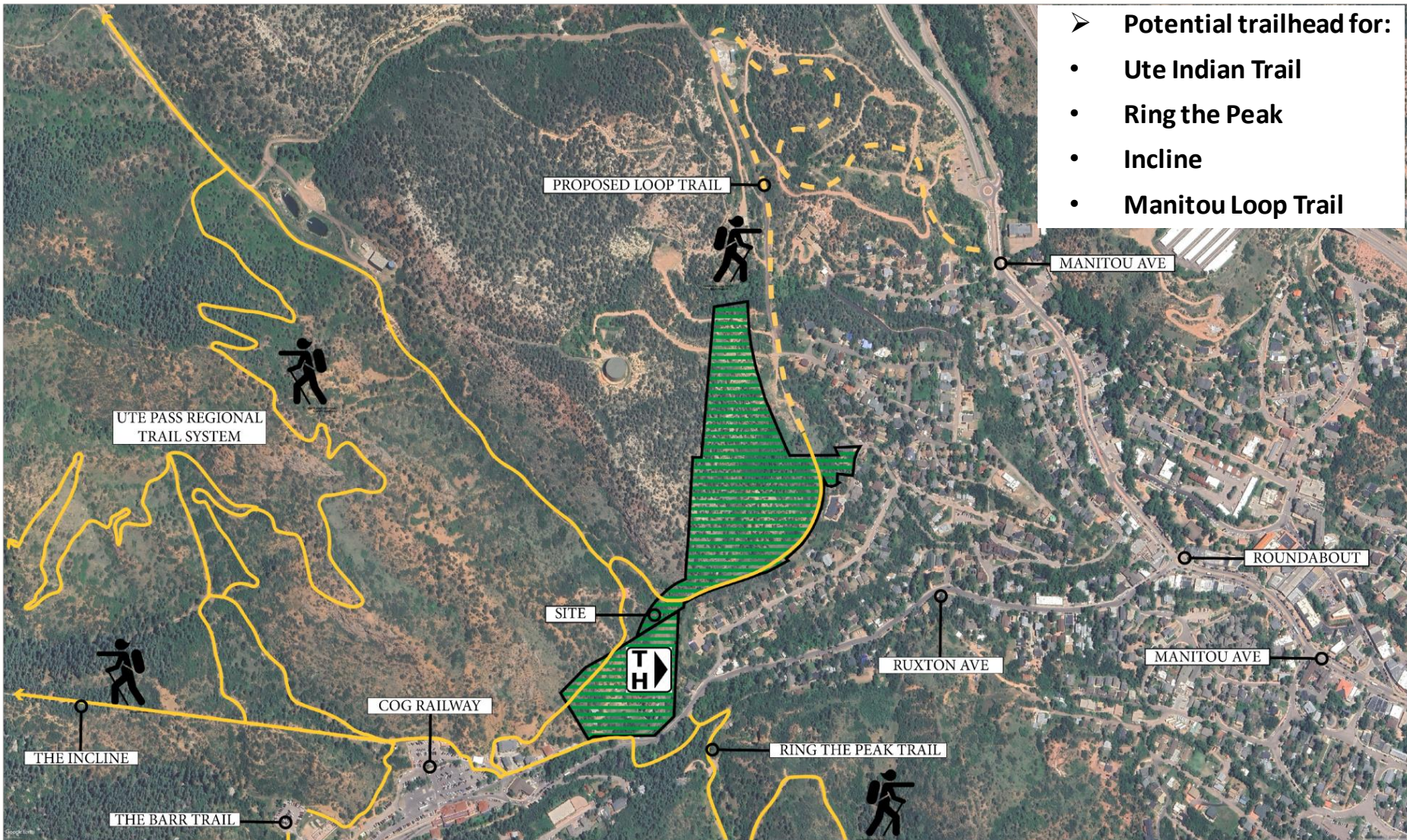
- Limited right-of-way, historic structures and retaining walls, steep slopes, Ruxton Creek, on-street parking
- Traffic operations in the corridor are similar between weekdays and weekends;
- Thousands of pedestrians utilize Ruxton Avenue, with the majority of foot traffic occurring weekends;
- 44% of trips on Ruxton Avenue have a destination in Manitou Springs
- 50% of the trips on Ruxton Avenue do not have a destination in Manitou Springs



- Cog to roundabout 0.7 miles
- Proposed road 1.1 miles
- Alternate emergency evacuation route
- Provide line of defense / hydrants



FIRE SAFETY



- Potential trailhead for:
- Ute Indian Trail
 - Ring the Peak
 - Incline
 - Manitou Loop Trail

OPEN SPACE AND TRAILS

CONSISTENCY WITH MANITOU SPRINGS P.O.S.T. MASTER PLAN

➤ Post Master Plan Goals

- Property and easement acquisitions for linear park corridor
- Identify and engage funding/implementation partners
- Acquire property and develop new park sites-Jenkins property near Iron Springs
- Integrate new park sites with multi-use trail system
- Concentrate acquisitions in four larger acquisition areas...Northwest of Iron Spring
- Adopt fire mitigation strategies
- Pursue sustainable alignments and easements for neighborhood access.
- Attention to ongoing flood and fire recovery issues
- Connectivity of all assets to other jurisdictions
- Incorporated on-street trails (tunnels portion of Midland Trail) to enhance transportation options and connectivity



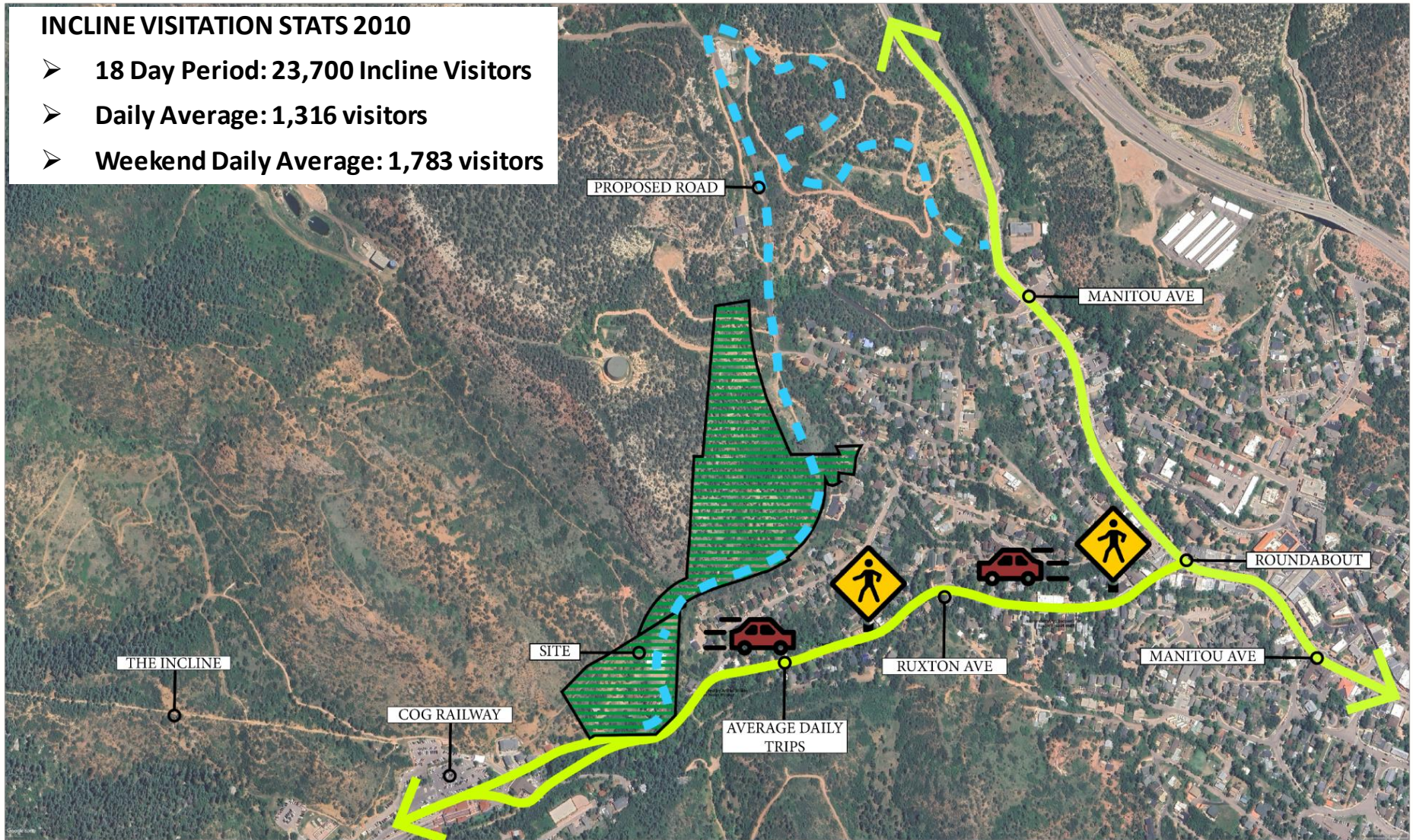
TRANSPORTATION & MOBILITY MASTER PLAN

Opportunity to Address Ruxton Ave Challenges

- The transportation network can be overloaded during peak times.
- Conflicts between accommodating visitors and preserving resident quality of life.
- Conflicting priorities between residents, business owners, and elected officials.
- The roadway network is primarily designed with the sole function of moving and storing personal automobiles with little accommodation for other modes.
- There are a few corridors, Ruxton Avenue mainly, which have no clear alternate route, creating congestion and potential emergency access challenges.
- Intersections within the City sometimes struggle to effectively handle peak traffic demands. Improvements should be made to major intersections within the city along Manitou Avenue at...Ruxton Avenue...

INCLINE VISITATION STATS 2010

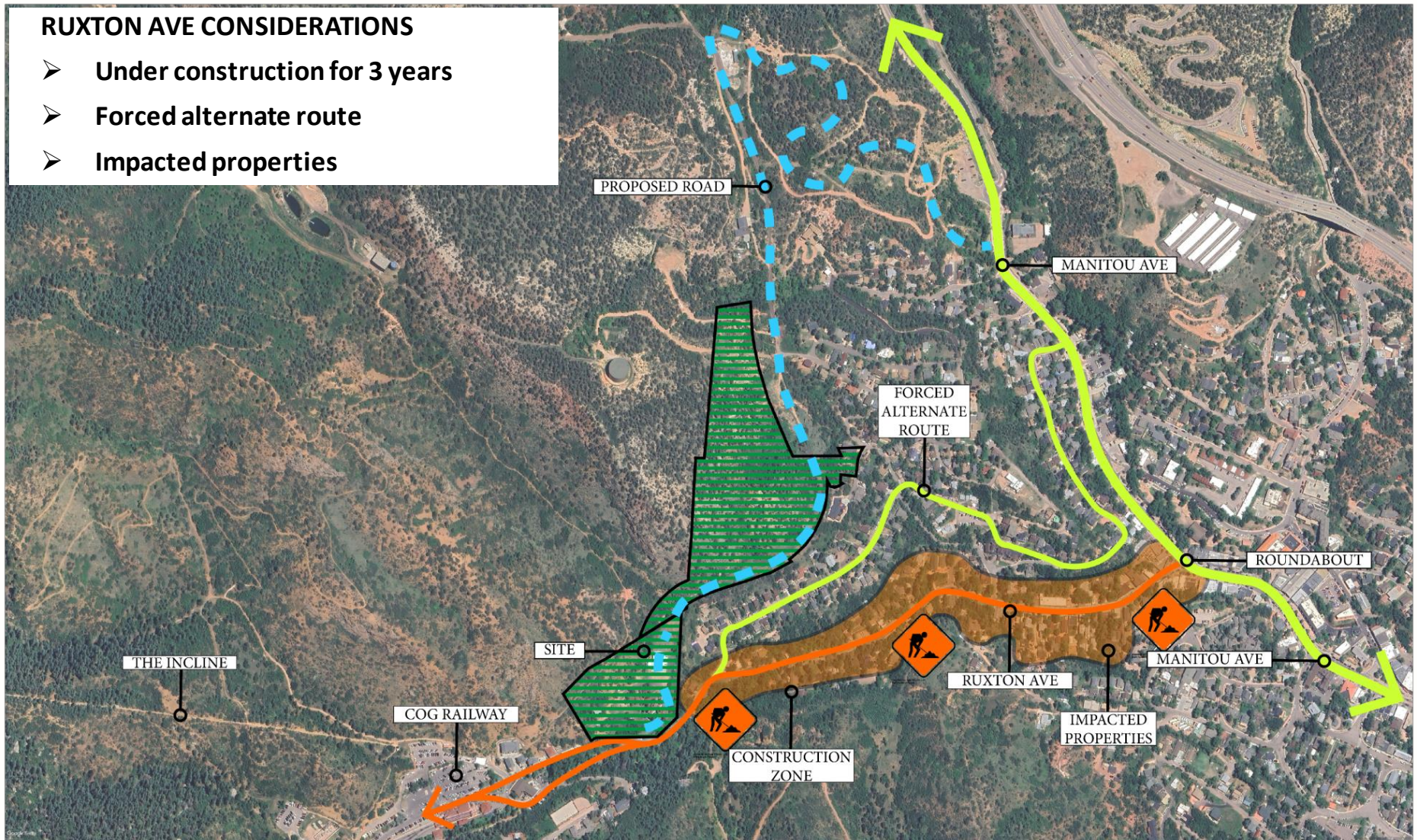
- 18 Day Period: 23,700 Incline Visitors
- Daily Average: 1,316 visitors
- Weekend Daily Average: 1,783 visitors



RUXTON AVE CONGESTION

RUXTON AVE CONSIDERATIONS

- Under construction for 3 years
- Forced alternate route
- Impacted properties

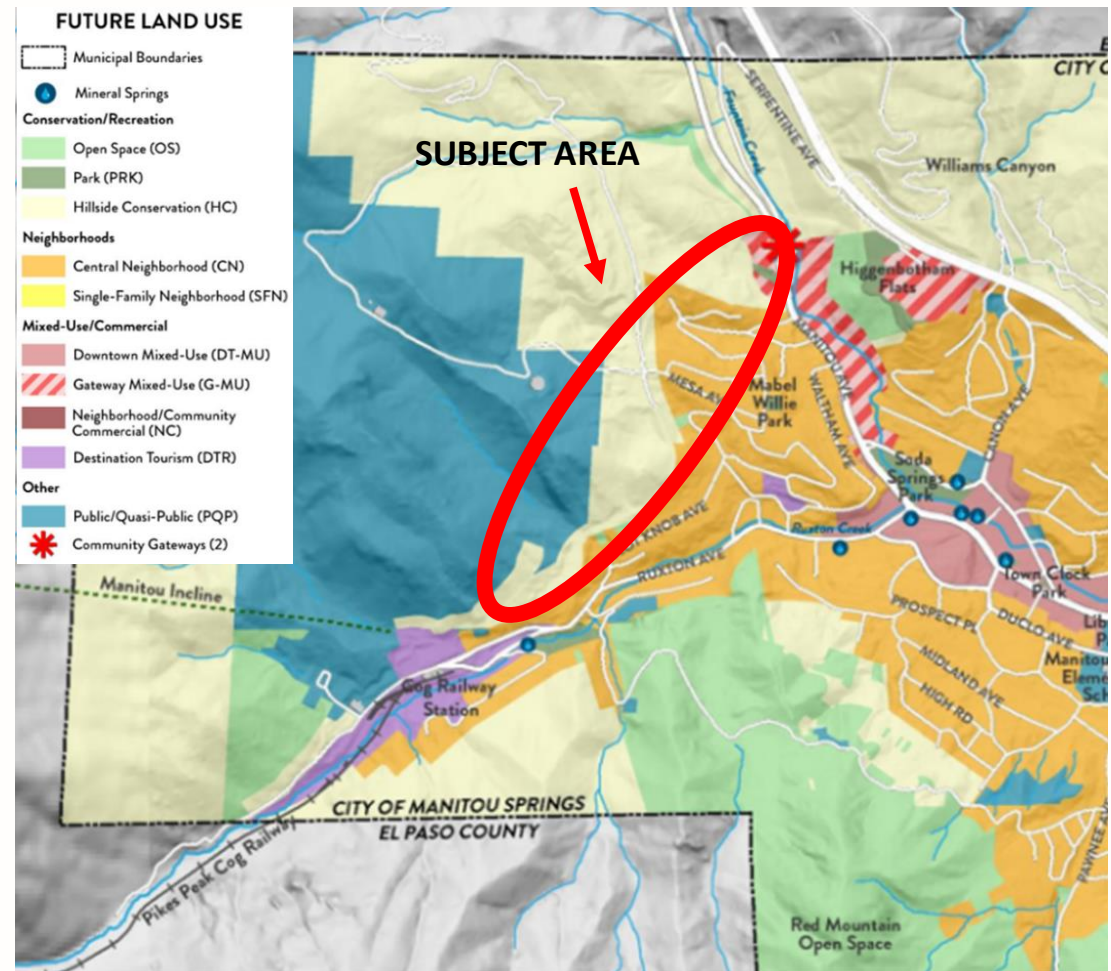


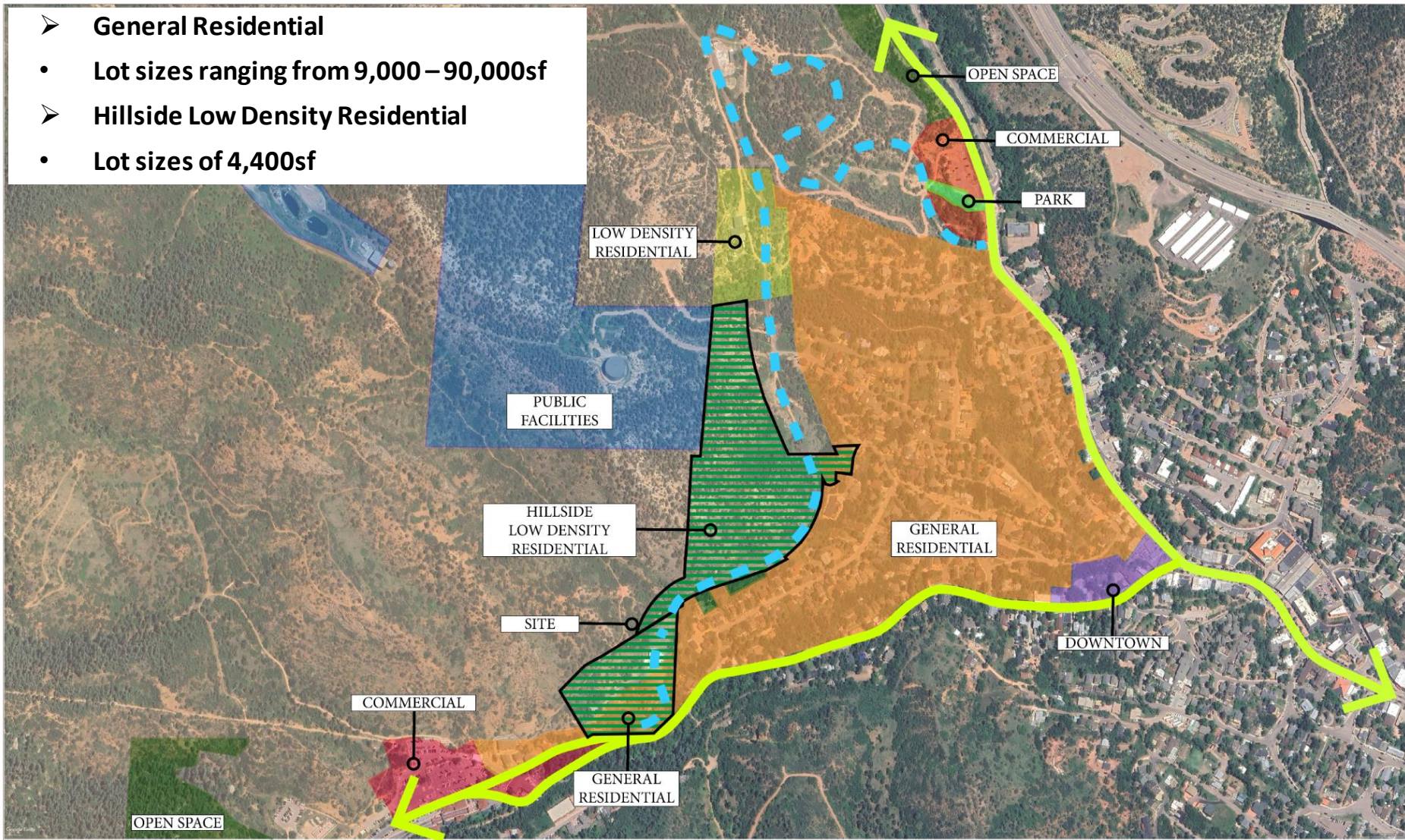
ROAD CONSTRUCTION RELIEF

PLAN MANITOU

Transportation & Mobility Goals & Policies

- Mitigate special event/seasonal congestion
- Continue to evaluate approaches to reduce impacts from traffic and parking on the Ruxton Corridor
- Expand multi-use trail connections
- Improve safety, functionality, and resiliency of the transportation system.
- Identify critical deficiencies and vulnerabilities in the transportation system.
- Prioritize actions that will improve the safety and functionality of the transportation system in emergency and disaster conditions.





OPEN SPACE COMMUNITY PLANNING